



上海泽厘精密机电科技有限公司

Shanghai ZeLi Precision Industry Co.,LTD.



CONTENTS

01

Our team

02

Our growth record

03

Our products

04

Our services

05

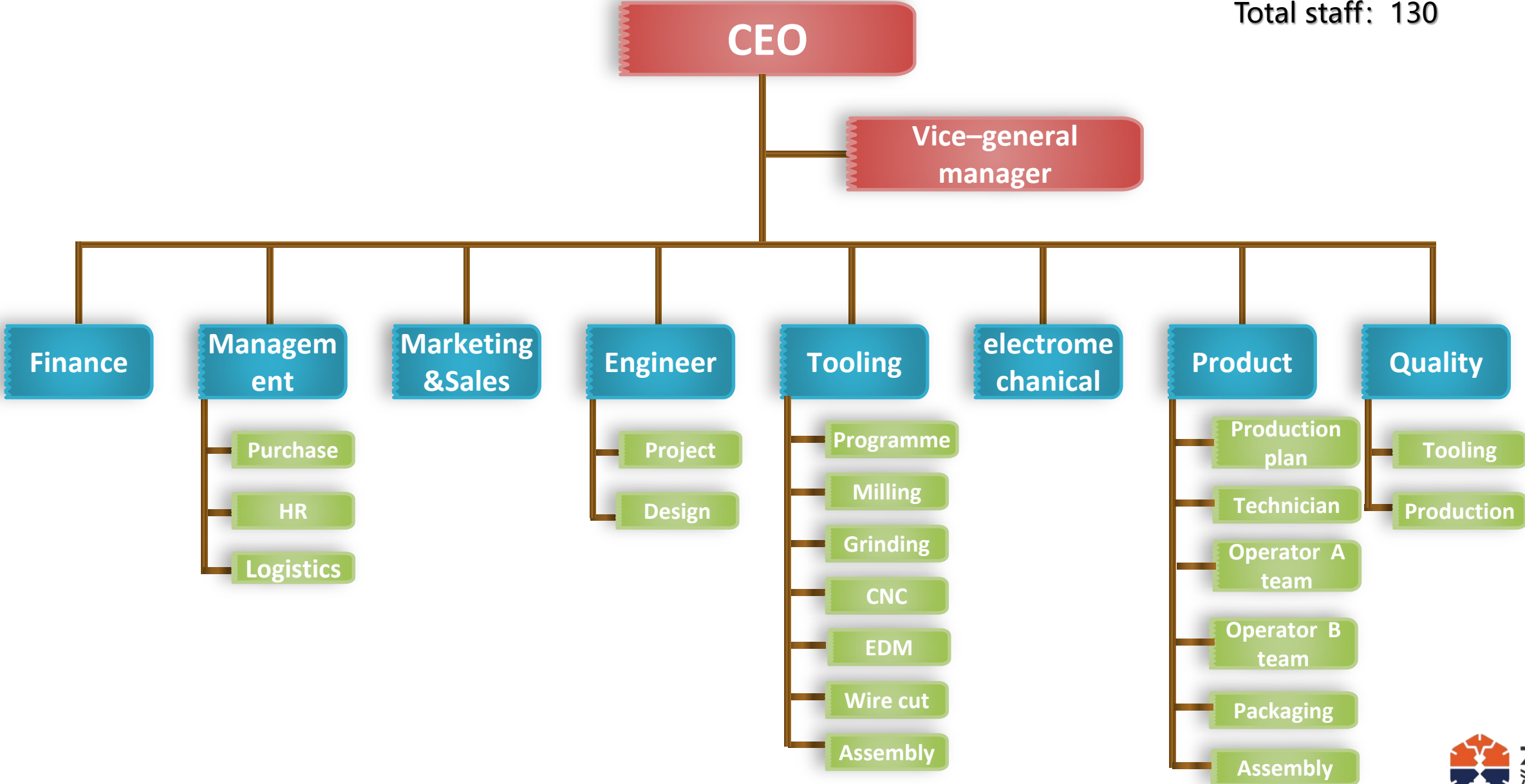
Our customers

01 Our team



Organization Chart-ZeLi

Total staff: 130



Our Production Team



Technology Dept.

designer team (8 staffs)
project manager team (6 staffs)
Include 2 Gear experts.



Tooling Dept.

milling machine(4 staffs)
grinding machine(7 staffs)
CNC(7 staffs)
EDM(8 staffs)
wire cutting(4 staffs)
programming (4 staffs)
tooling assembly team(9 staffs)
(total 43 staffs) .



Product Dept.

Technician (11 staffs)
Operation team (18 staffs)
Inspection team (3 staffs)
Assembly team (2 staffs)
(total 33 staffs)



Quality Dept.

Include tooling and injection team (total 10 staffs) .

02 Growth of ZeLi



Chronicle of events

Sep. 2017

In order to expand the production capacity, the factory moved to 566 maoting road, SongJiang, and the plant area increased to 11,000 square meters.

Apr.,2010

Established injection mould factory and provide precision injection products.

2019

Awarded the title of "high-tech enterprise" by the government.
Got 10 patents.

Apr.,2014

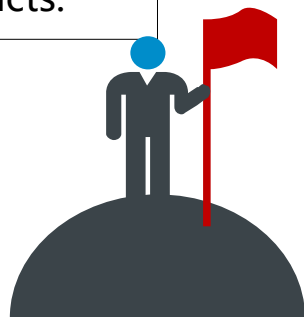
Obtained ISO/TS 16949:2009 certificate through Swiss SGS company(upgrade to IATF16949/2016 in 2018Y) .

Jan.,2012

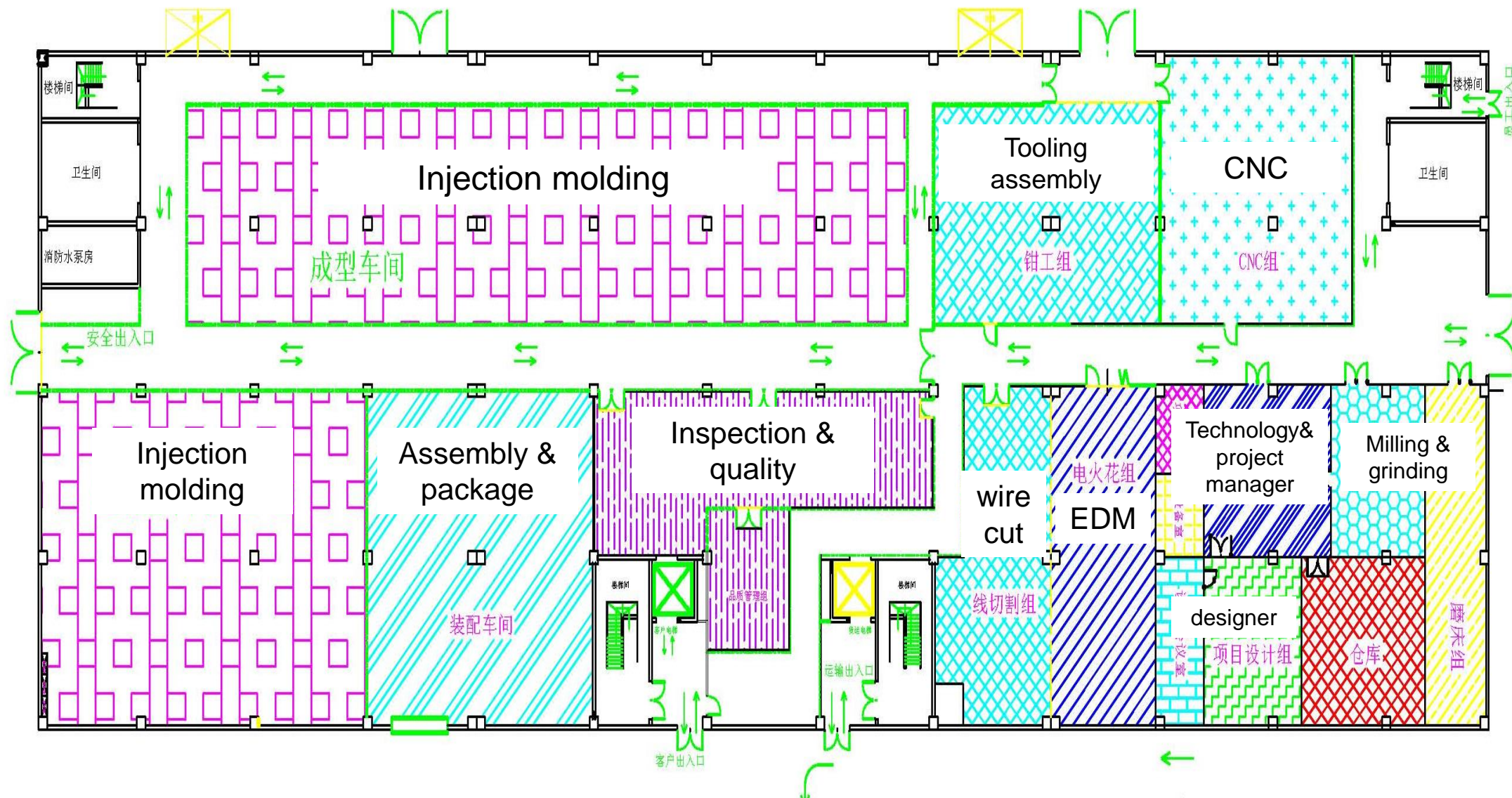
Obtained ISO9001:2015 certificate through Swiss SGS company.

Aug.,2003

Incorporation.



Factory of floor plan



Factory of environment



03 Product Introduction of ZeLi



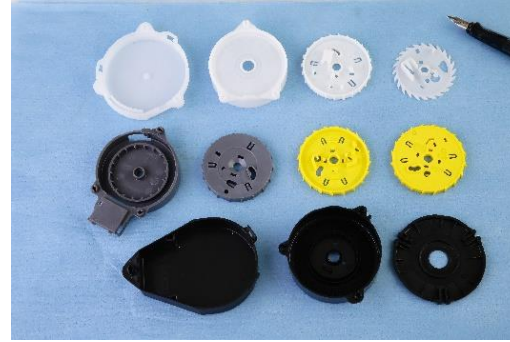
Safety belt & Automobile seats related products



Safety belt adjustment



Safety belt lock



Safety belt retractor

1. Safety belt related products
2. Automobile seats related products.



Safety belt CS sensor



Safety belt webbing guide



Seat headrest structural parts



Seat angle modulation gear box

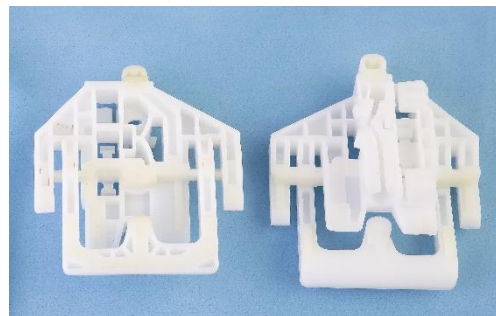
Injection Plastic Parts for Automobile



valve



Sky window gear box



Window slide



Interior



Connector



Connector



2K fastener



Damp & rack

Gear box for Automobile



Gear box for skylight adjustment

Gear box for seat adjustment

EPB gear box

Gear box for window glass lifter

Gear box for air condition

Steering wheel corner gear box

Cogwheel, worm, inner gear ring,
etc.

EPB auto park gear box



Material:

Housing: PBT+GF30

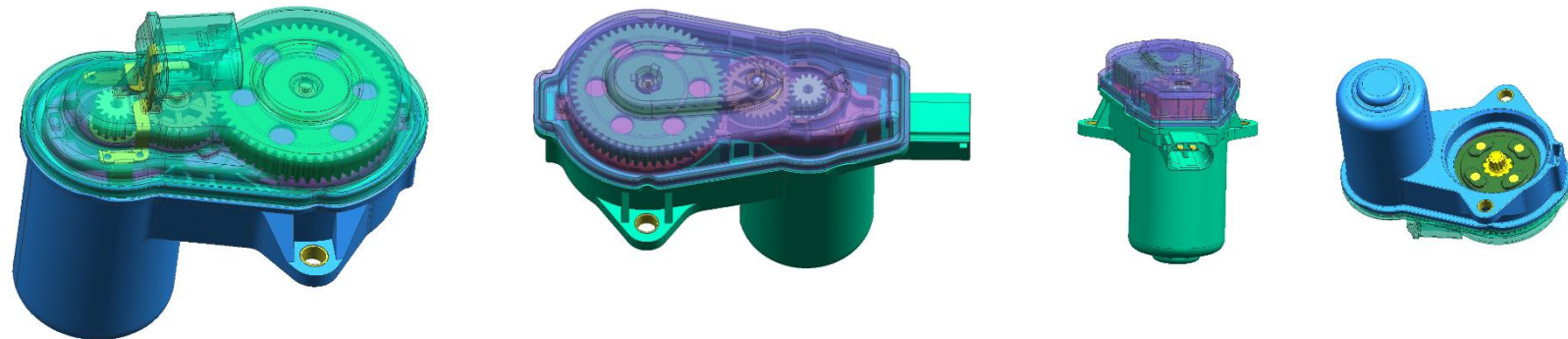
Gear: PPA+GF50

Precision:

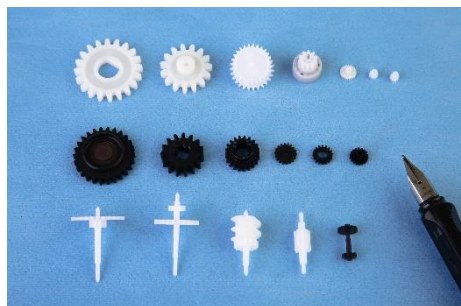
Housing:

High profile precision of
welding line

Gear: ISO 9



Precision Gear for Automobile



Spur gear



Spur gear



Inner gear



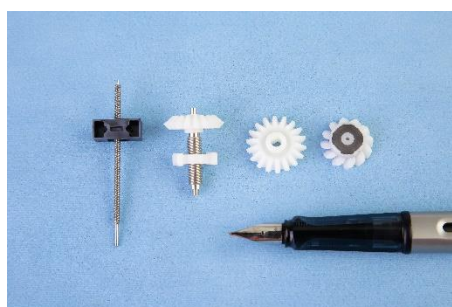
Gear with insert



Helical gear



Worm & Worm wheel

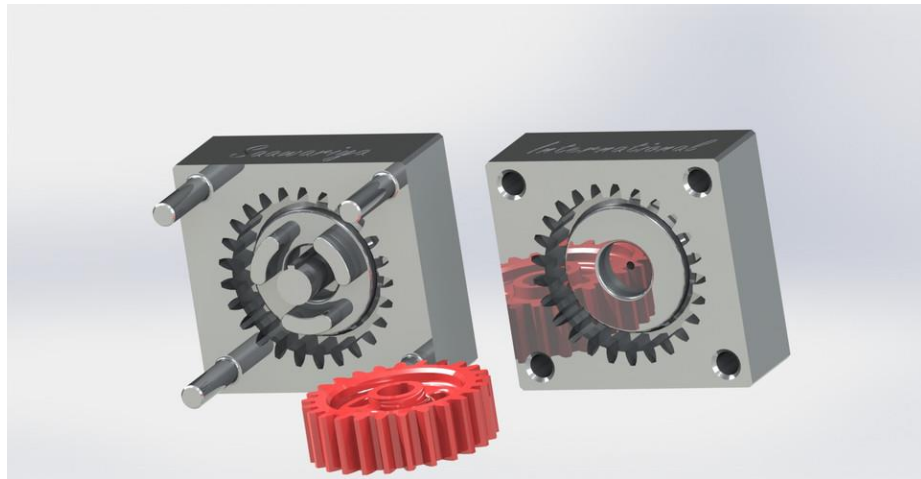


Bevel gear



Special-shaped gear

Precision Gear Wheel Tooling



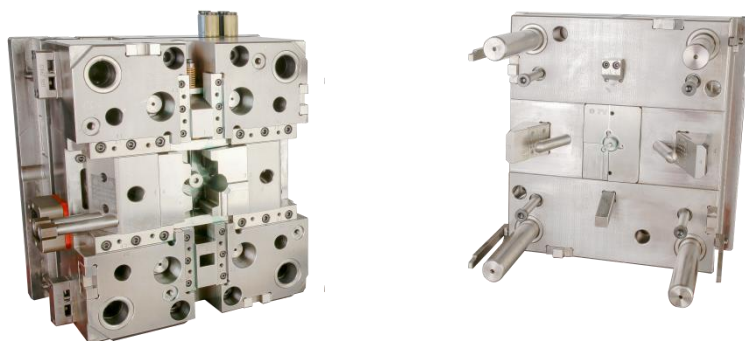
Features: high precision、 High strength
、 Heat resisting、 Low noise、 Hard-wearing.

Common Materials:

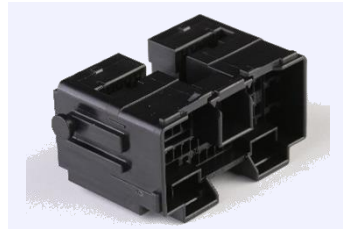
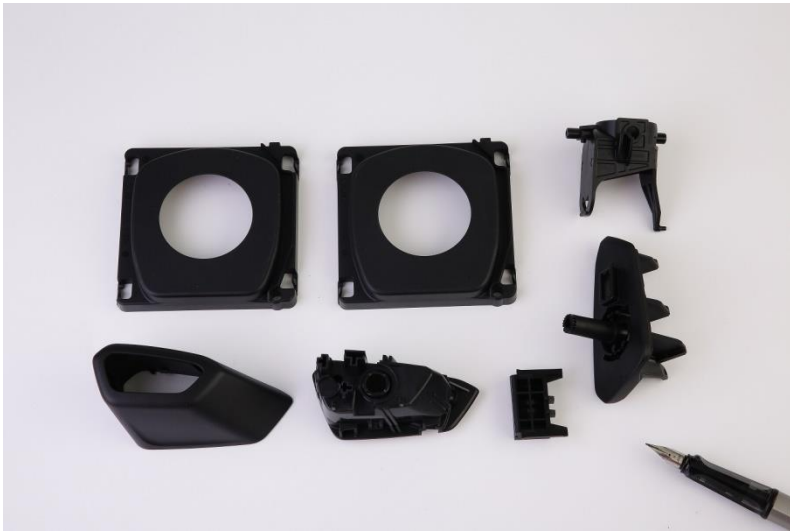
POM、 PPA、 PA+ glass fiber、 PPS、 PEEK.

Reaching grade of our gear:

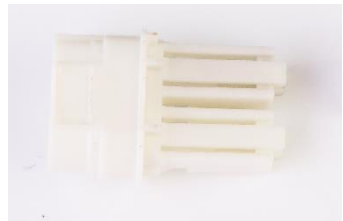
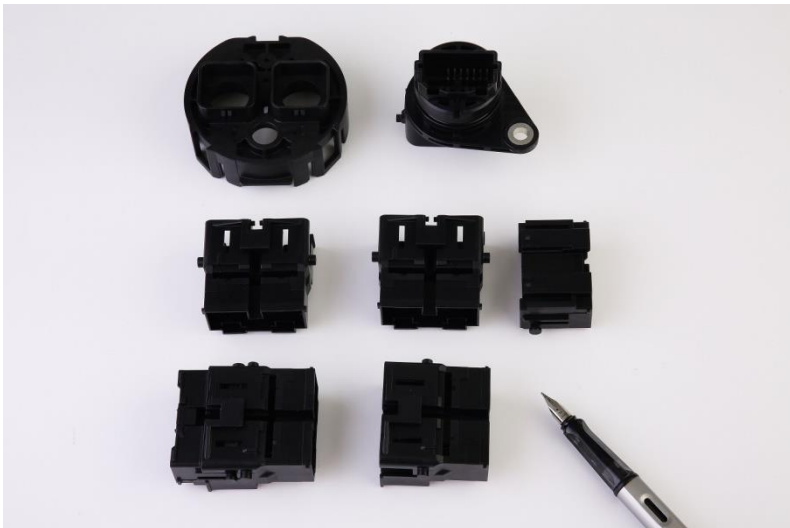
ISO 6, DIN 6, JIS 1



Precision Connector for Automobile

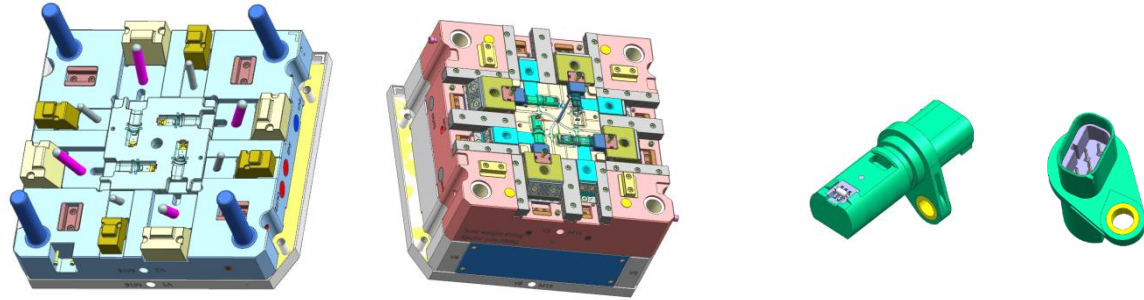


Features: complex design, thin-wall, insert molding, high precision



Common Materials:
PA66+fiber, PBT , LCP,
PA, PPE, PET

Precision Sensor for Automobile



Features: insert molding, high precision

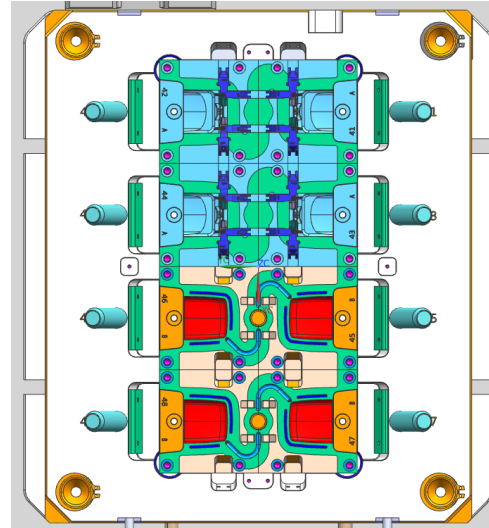
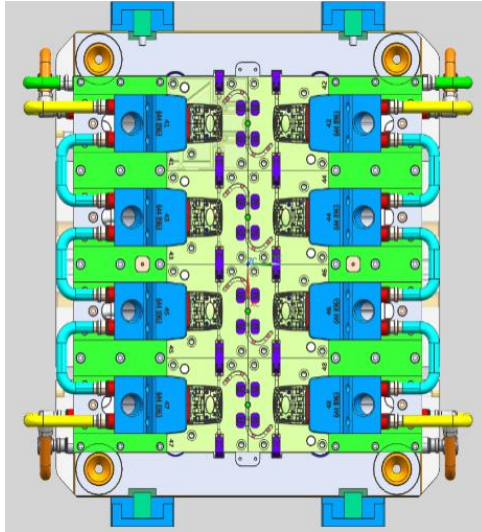
Common Materials: PA66+fiber, PBT , PET , ABS , PMMA , PVC



Automotive applications:

air flow, ABS, throttle, camshaft, crankshaft position, speed sensing, knock sensing.

Precision 2K Injection Tooling



Safety belt buckle shell

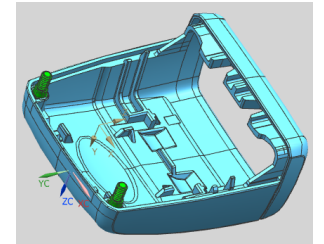
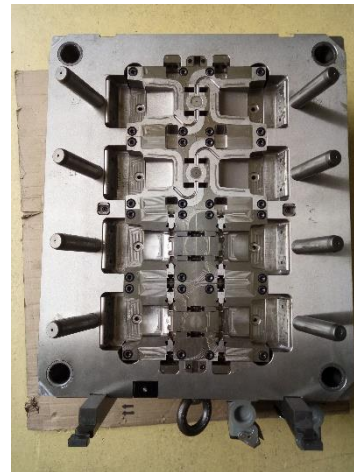
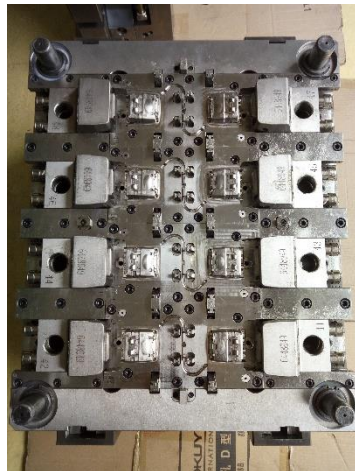
Number of mold cavity: 4+4 cavity

Material:

First shot PA50GF+second shot PP

Injection machine: 180T, Double color.

Cycle time: 38S



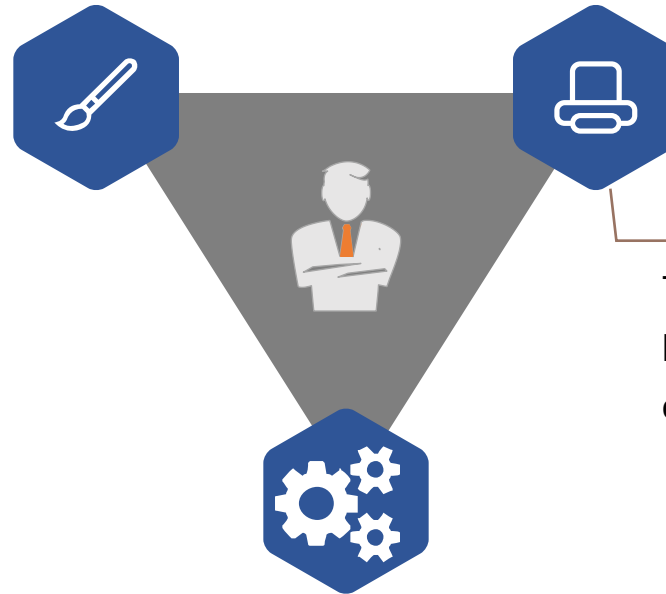
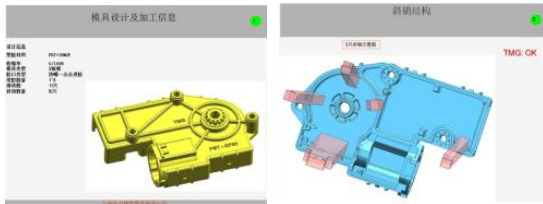
04 Service of Zeli



Design Precision Tooling

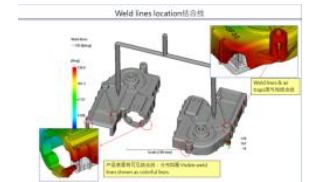
Confirm DFM report

Project lead drive, made detailed DFM report and then confirm with client in the early stage, and tracked the project progress throughout the whole process. After review, design, processing, assembly, test tooling, modify, and finally submitted it to client.



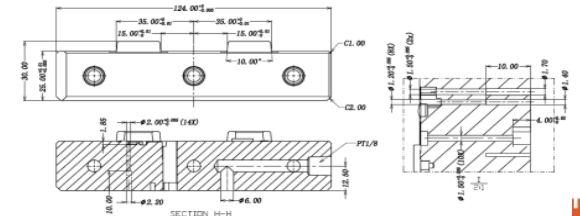
Analysis Report of Mould Process

The pre-design mold flow analysis will confirm the location of gate, shrinkage deformation, vent and other possible problems.



Drawing Tolerance Control

Our workshop design drawings with high requirement at the first, then guides the whole tooling manufacturing process, according to the project and engineering strictly.



ERP Management



Tooling Manufacturing Management System

工件异常记录表

异常单号: 20160726027 保存

模具内部编号:	NSE 2ND 1_160627	图号:	NSE-2ND-100-INSERT	材质:	默认
发现部门:	CNC组	体积:	0.0	工件监控编号:	5273
加工件数:	15.0	发现日期:	2016-07-26	罚款金额:	0.0
损失金额:	430.000/245.442	自检结果:	不合格		

序号	选择	数量	异常类型	处理结果	责任部门	责任人	责任工序
1	<input type="checkbox"/>	3.0	加工失误	返工	CNC组	吴志力	CNC精

Quality Control System

模具进度看板

模具名称	模具内部编号	制品名称	交货期	计划完成时间	完成百分比
180-01801	20064	91261812	2016-08-03	2016-08-03	68.00%

模具名称	模具内部编号	制品名称	交货期	计划完成时间	完成百分比
180-01801	20064	91261812	2016-08-03	2016-08-03	68.00%

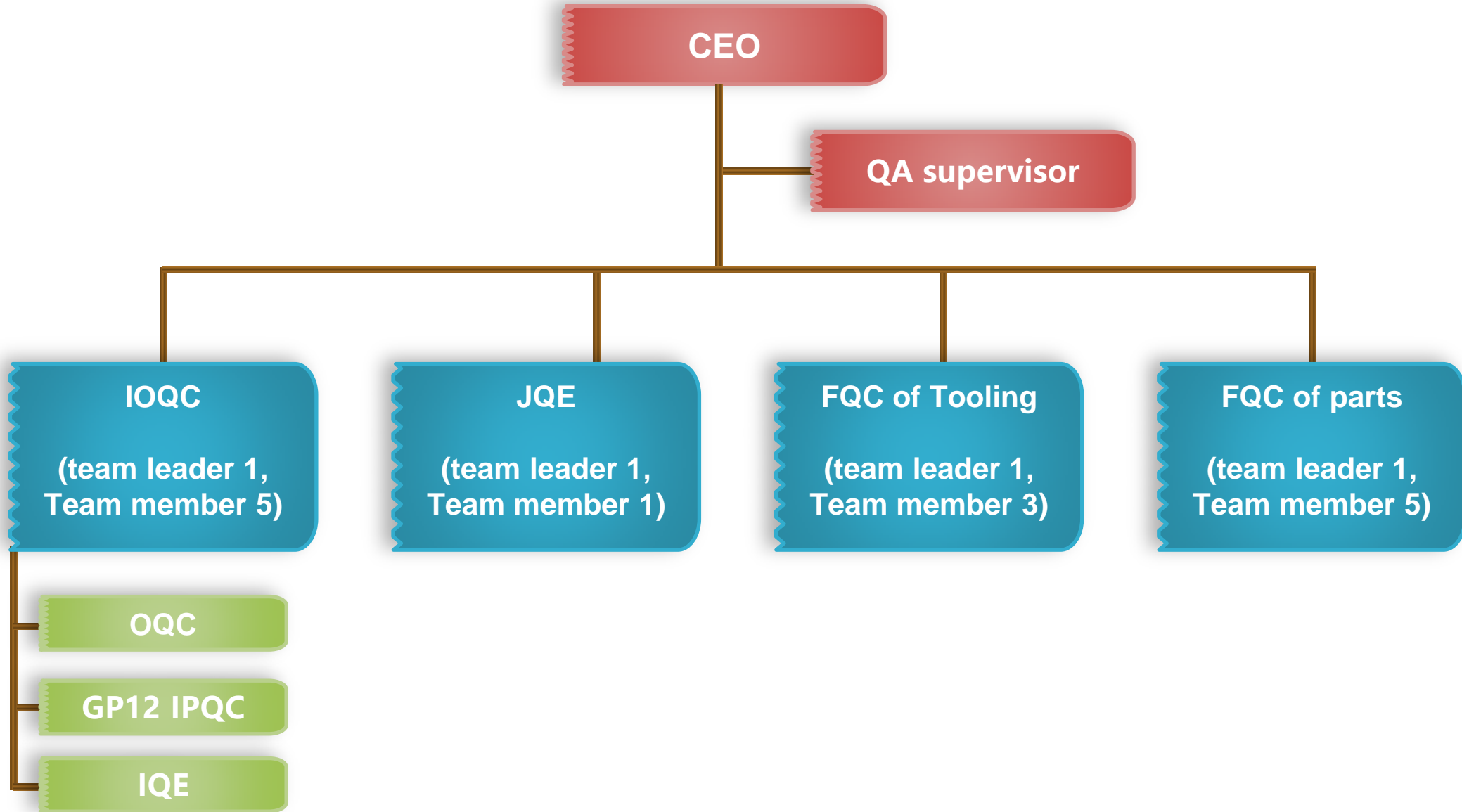
图号	零件名称	进度	品质	交期	小	品质	CNC精	品质	W/C	品质			
图号: 8001	零件名称: 进口套 (8454)	21%	X	品质	CNC粗	品质	热处理 3天	PG 小	品质	CNC精	品质	W/C	品质
图号: 8002	零件名称: 进口料嘴 (8455)	80%	X	品质	热处理 3天	PG 小	品质	CNC精	品质	W/C	品质		
图号: 8003	零件名称: 垫板 (8456)	100%	X	品质	热处理 3天	PG 小	品质						
图号: 8004	零件名称: 侧模框 (8457)	52%	X	品质	PG 小	品质	CNC粗	品质	W/C	品质			
图号: 8005	零件名称: 后模框 (8458)	89%	X	品质	PG 小	品质	W/C	品质	CNC粗				
图号: 8006	零件名称: 顶模框 (8459)	100%	X	品质	PG 小	品质	CNC粗	品质					

Production Schedule Monitor

The screenshot shows a modern ERP dashboard with a sidebar navigation menu. The main content area includes a '物料清单' (BOM) section with a tree view, a '供应链管理' (Supply Chain Management) section with a flow diagram, and a '订单管理' (Order Management) section with a list of orders. The interface is clean and professional, with a focus on data visualization and workflow management.

Supply chain ERP System

Quality Organization Chart



Precision Tooling Processing Equipment



MAKINO V33I CNC

- SPEED—32000
- MIN. TOOL—D0.3
- Positioning accuracy —0.001
- working accuracy — 0.003



MAKINO F3 CNC

- SPEED—20000
- MIN. TOOL—D0.3
- Positioning accuracy —0.001
- working accuracy — 0.005



MAKINO Spark

- Positioning accuracy—0.001
- working accuracy — 0.005
- Min. Electrode — Diameter 0.08



Sodick Wire cut

- Positioning accuracy— 0.001
- working accuracy—0.003
- MIN. Wire—Diameter 0.100



AGIE Charmilles

- Positioning accuracy— 0.001
- working accuracy—0.001
- MIN. Wire—Diameter 0.05

List of Precision Tooling Machines

Equipment	Brand	Model	Accuracy	QTY	Total
Lathe	SHENG YANG	CA6136	0.02	1	1
Milling Machine	QUICK JET	QJM-QB-VA	0.02	1	4
	QUICK JET	KB-A8-VS	0.02	1	
	TOPONE	5VK	0.02	1	
	TOPONE	TOM 3HG	0.02	1	
Grinding Machine	JOENLIH	618	0.001	5	9
	KENT	618	0.002	3	
	KENT	KCS-84AHD	0.01	1	
CNC	GF MIKRON	HSM500	0.005	1	8
	MAKINO	S33	0.005	1	
	MAKINO	F3	0.005	2	
	MAKINO	V33I	0.003	3	
	FANUC	ROBDRILL D14MIA	0.01	1	
EDM	MAKINO	EDGE2	0.005	2	9
	MAKINO	EDGE3	0.005	6	
	NEUAR	M-30	0.005	1	
Wire Cut	AGIE Charmilles	CUT 2000S	0.001	1	4
	AGIE Charmilles	CUT 350P	0.002	1	
	SODICK	AQ360	0.003	1	
	SODICK	AG400	0.003	1	

Inspection Equipment



ZEISS Three coordinates
Model :
CONTURA G2
Measuring
range :700*700*600
accuracy : 1.5+L/333



**NIKON CNC VIDEO
Measuring System**
accuracy—0.001



ZEISS METROTOM CT scans

- Measuring standard geometries and freeform surfaces
- Nominal/actual geometry comparison with a color-coded 3D visualization
- Complete initial first sample report
- Detecting and analyzing defects
- Porosity and inclusion analysis
- Damage and failure analysis
- Mounting checks
- Assembly checks



NIKON Microscope
accuracy—0.001



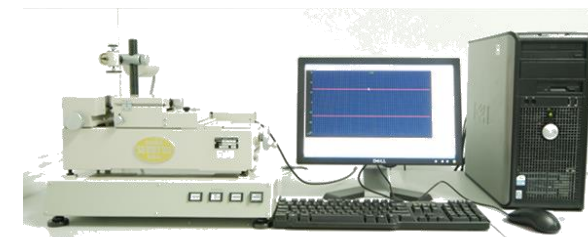
Mitutoyo projector
accuracy—0.002



keyence IM-DXW12N
accuracy—0.002



**Precision noise
analyzer**



Osaka engage instrument

List of Inspection Equipment

Brand	Model	Accuracy	QTY
CMM(ZEISS)	CONTURA G2	0.001	1
CMM(NIKON)	VMZ-R3020	0.001	1
Microscope(NIKON)	MM-400/S	0.001	2
Microscope(Mitutoty)	MF	0.001	1
Precision Projector(Mitutoty)	PH-3500	0.002	2
Gear mesh instrument(OSAKA)	GTP-4LS		1
Measuring Instrument(keyence)	IM-DXW12N	0.002	1
Microcomputer control electronic universal testing machine	EXCEED E43.104 10KN		1
ZEISS CT	METROTOM 800 130KV		1
Precision noise analyzer	RION NL-52		1

Injection Production Machines



FANUC Electric injection molding machine



ARBURG Electric injection molding machine



ARBURG Vertical injection molding machine
SIZE 120ton



The laser marker
For metal or plastic



AIDI Press
SIZE 80ton



Auxiliary-Kawata
dryer
device



Auxiliary-Youxin
servo robot

List of Injection Production Machine

Equipment	Brand	Model	QTY	Total
Horizontal Injection machine	ARBURG	150T	1	39
	ARBURG	100T	1	
	FANUC	220T	1	
	FANUC	150T	2	
	FANUC	100T	10	
	FANUC	100T (2K)	1	
	FANUC	50T	10	
	FANUC	30T	13	
Vertical Injection machine	ARBURG	ALLROUNDER 1200T 100	1	2
	SUMITOMO	120T	1	
Press	AIDA	NS1-800(S)	1	1

05 Customers of Zeli



Automobile customers of ZeLi





THANK YOU FOR YOUR WATCHING

金滢 Vivian Marketing & Sales Manager

TEL:13816943551

E-mail: vivian@zelimold.com

<http://www.shzelitech.com/>

